

***Alelion is a power solution provider that helps you succeed with your electrification.***

***Simply put, we have and give the power to change.***

# *What does it take to design for circularity?*

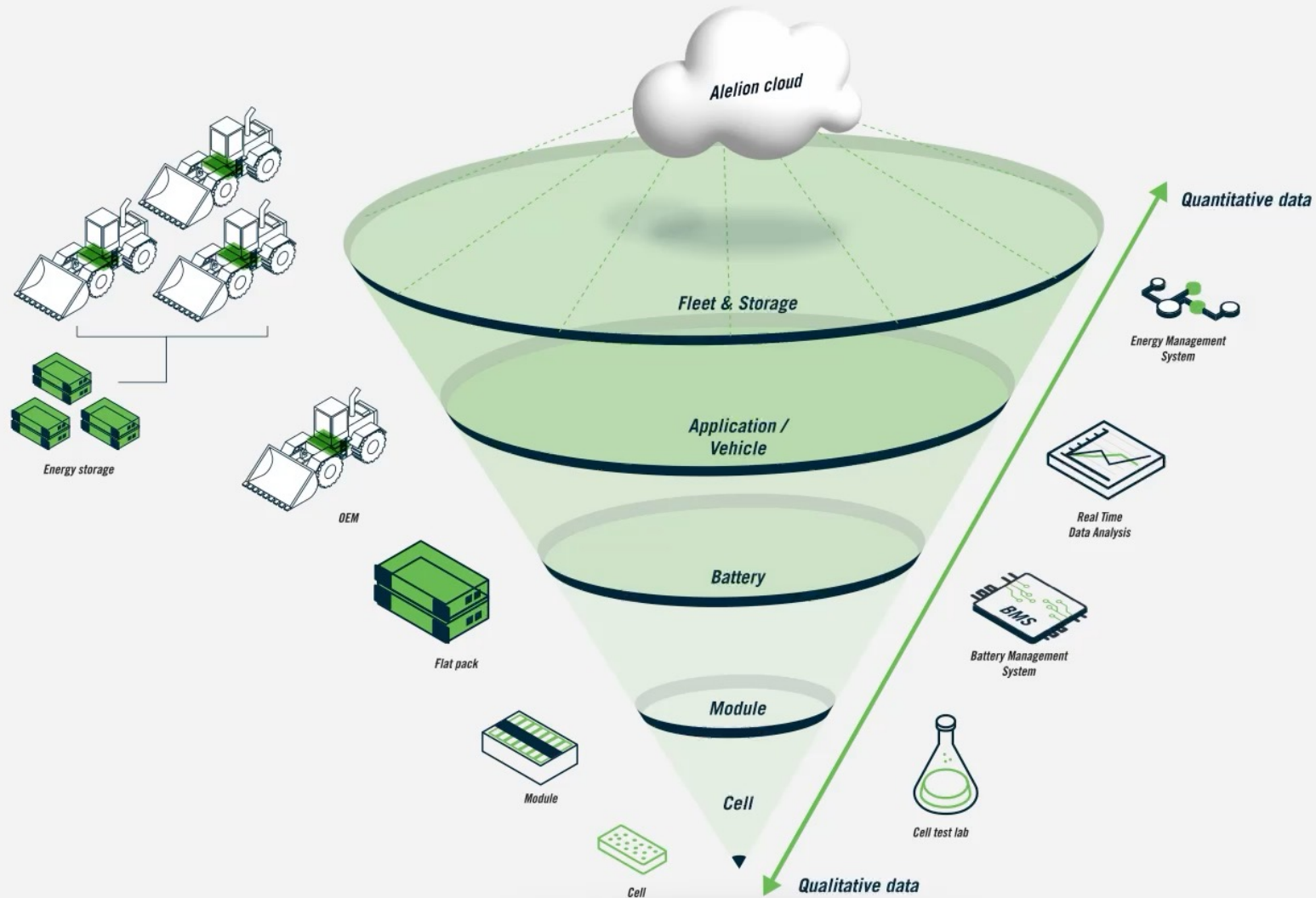


Henrik Svala  
*CTO*



Nareerat Plylahan  
*Cell- and module specialist*

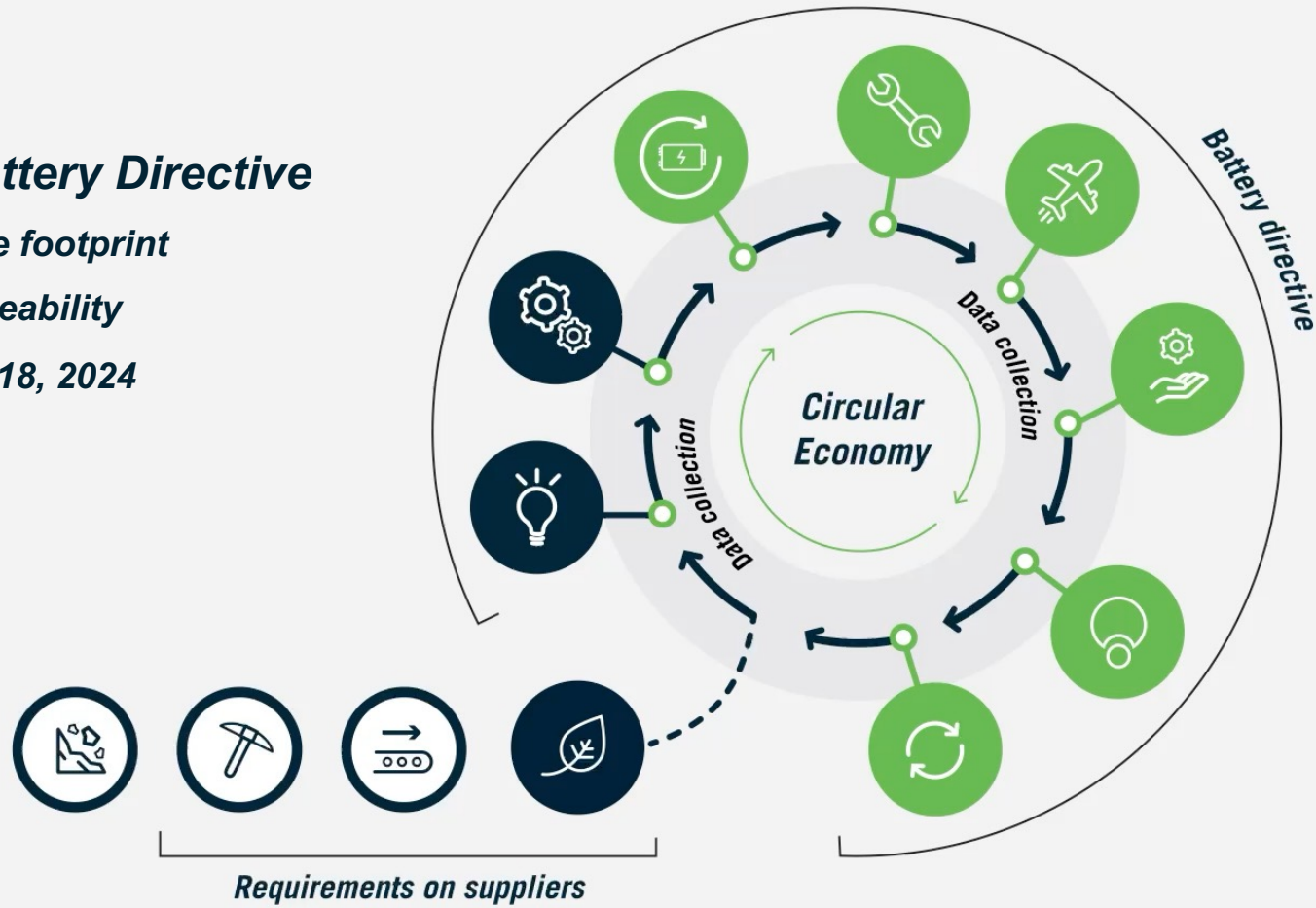
# Alelion – Cell to fleet



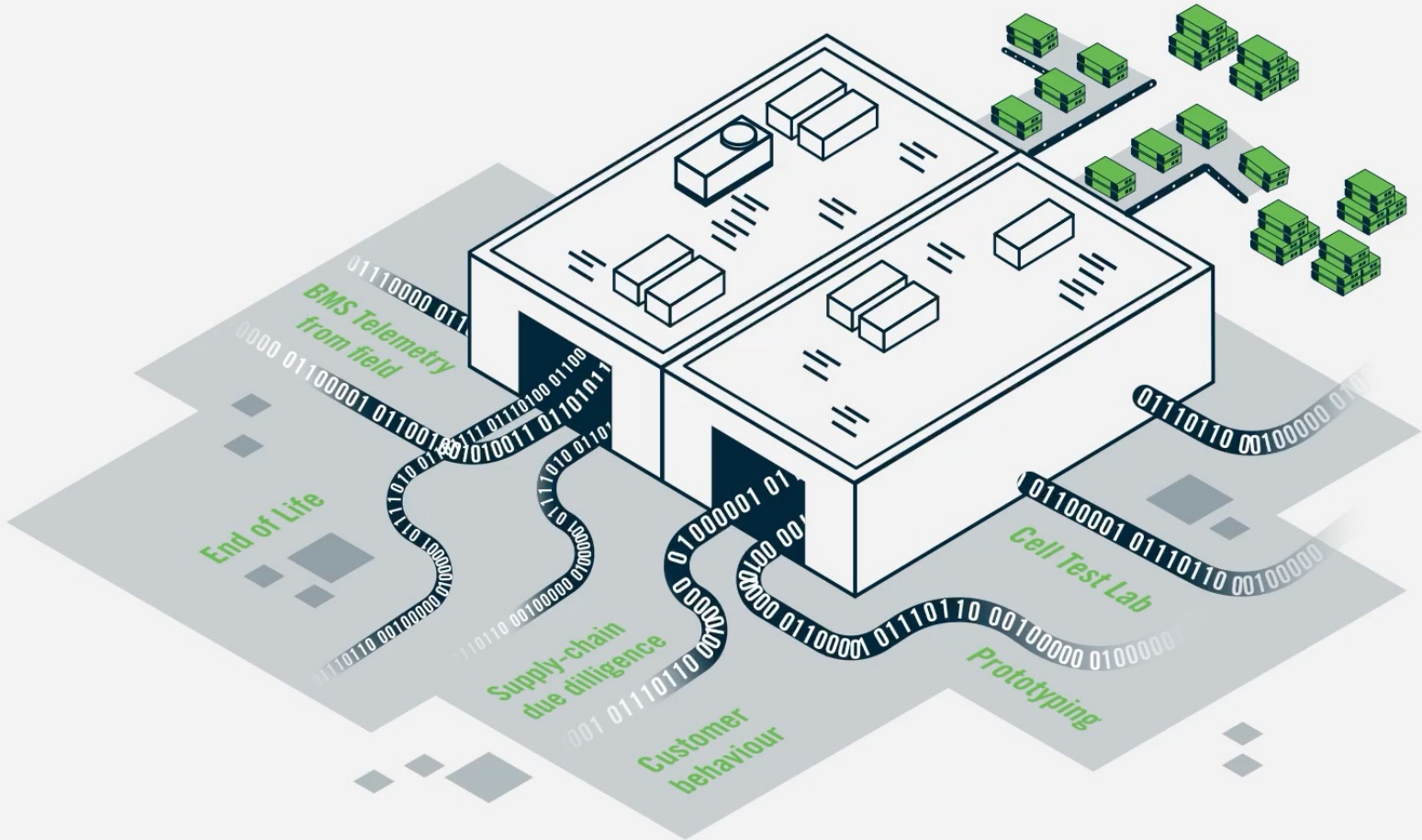
# The battery life cycle

## EU Battery Directive

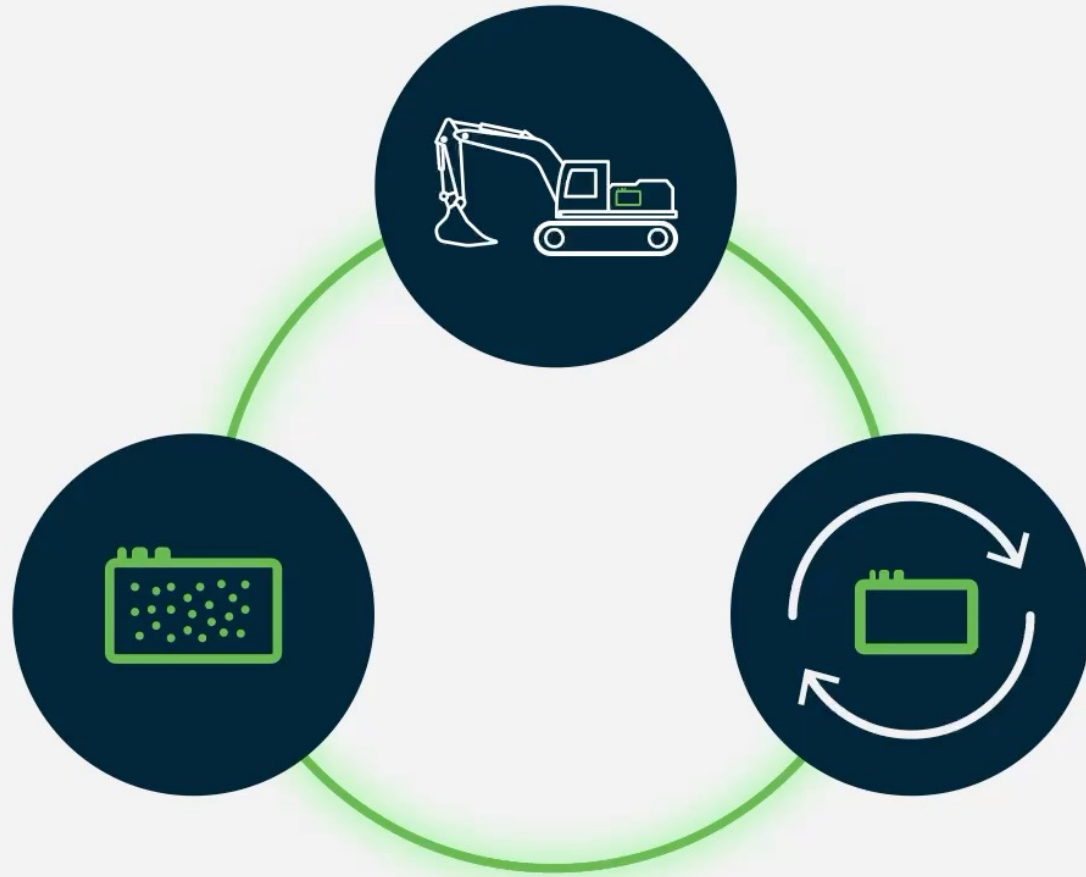
- CO<sub>2</sub>e footprint
- Traceability
- Feb 18, 2024



# Accumulated knowledge

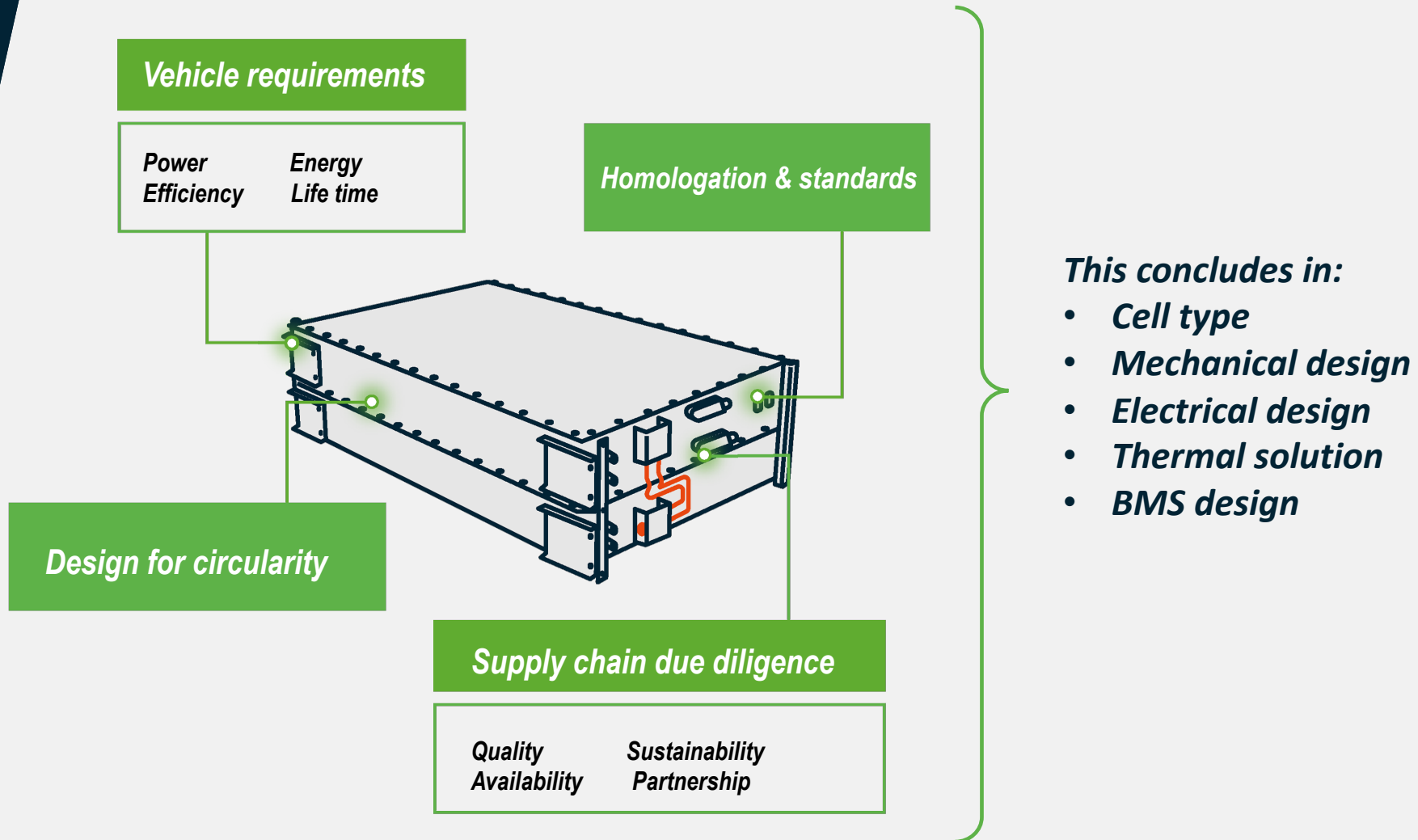


# Design – Use – Recycling



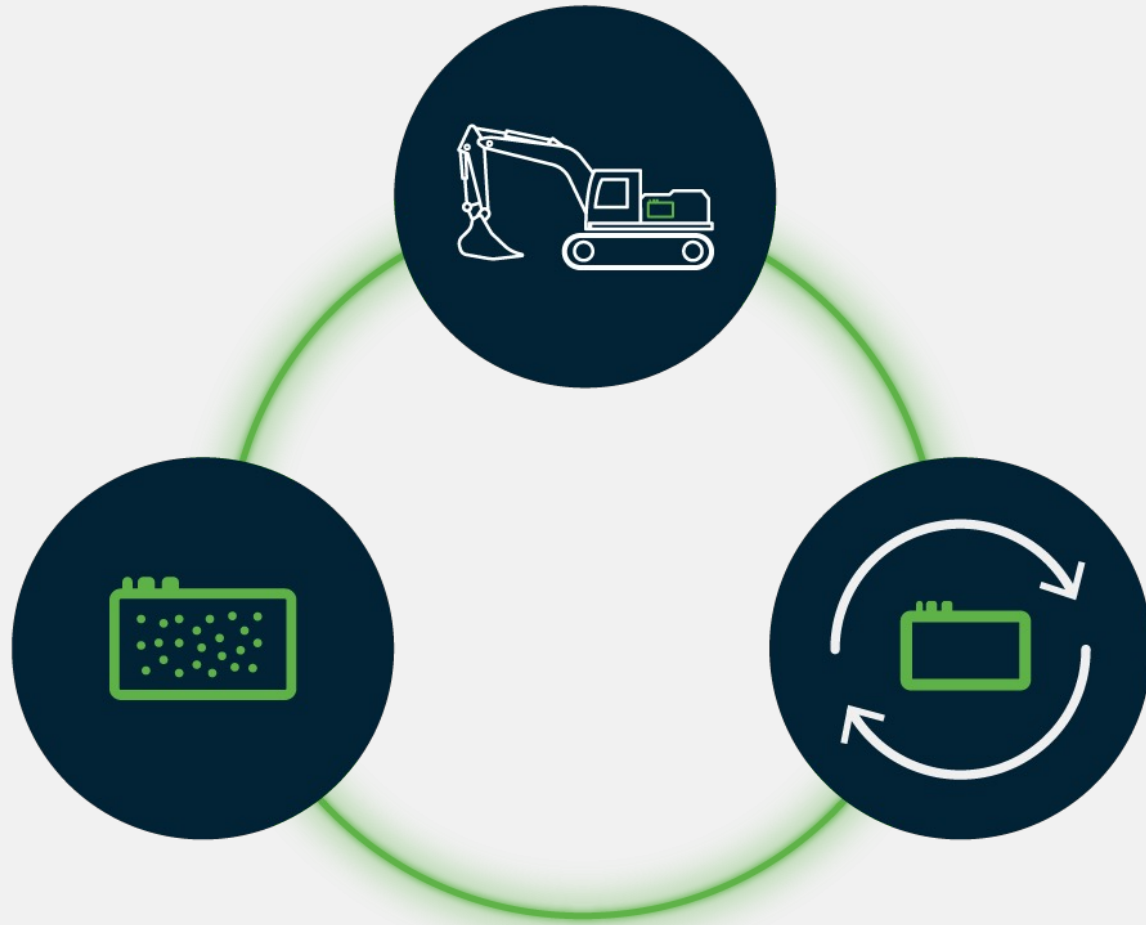
# What goes into battery design?

To make it easy to produce, disassemble, service and recycle



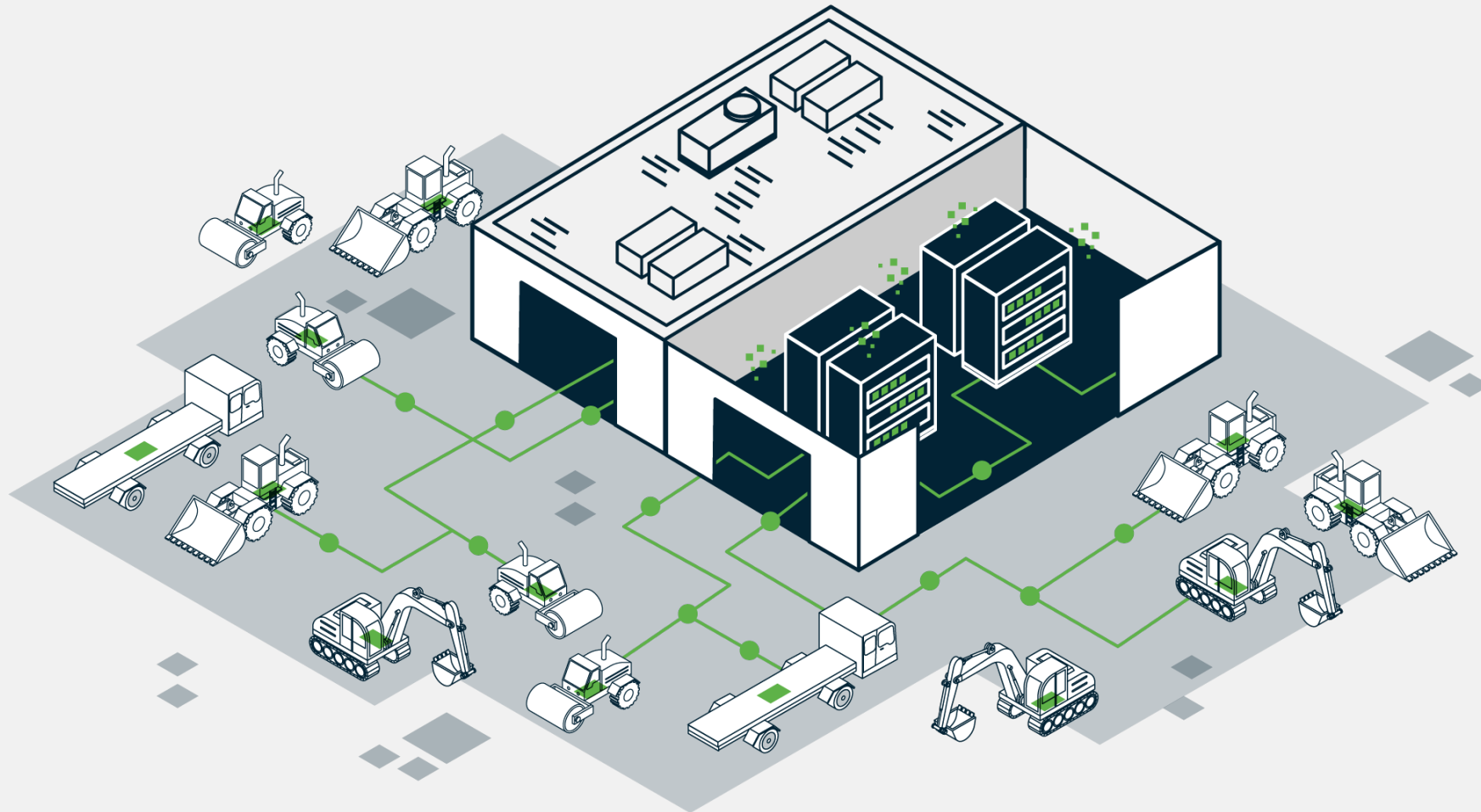


# Battery system use

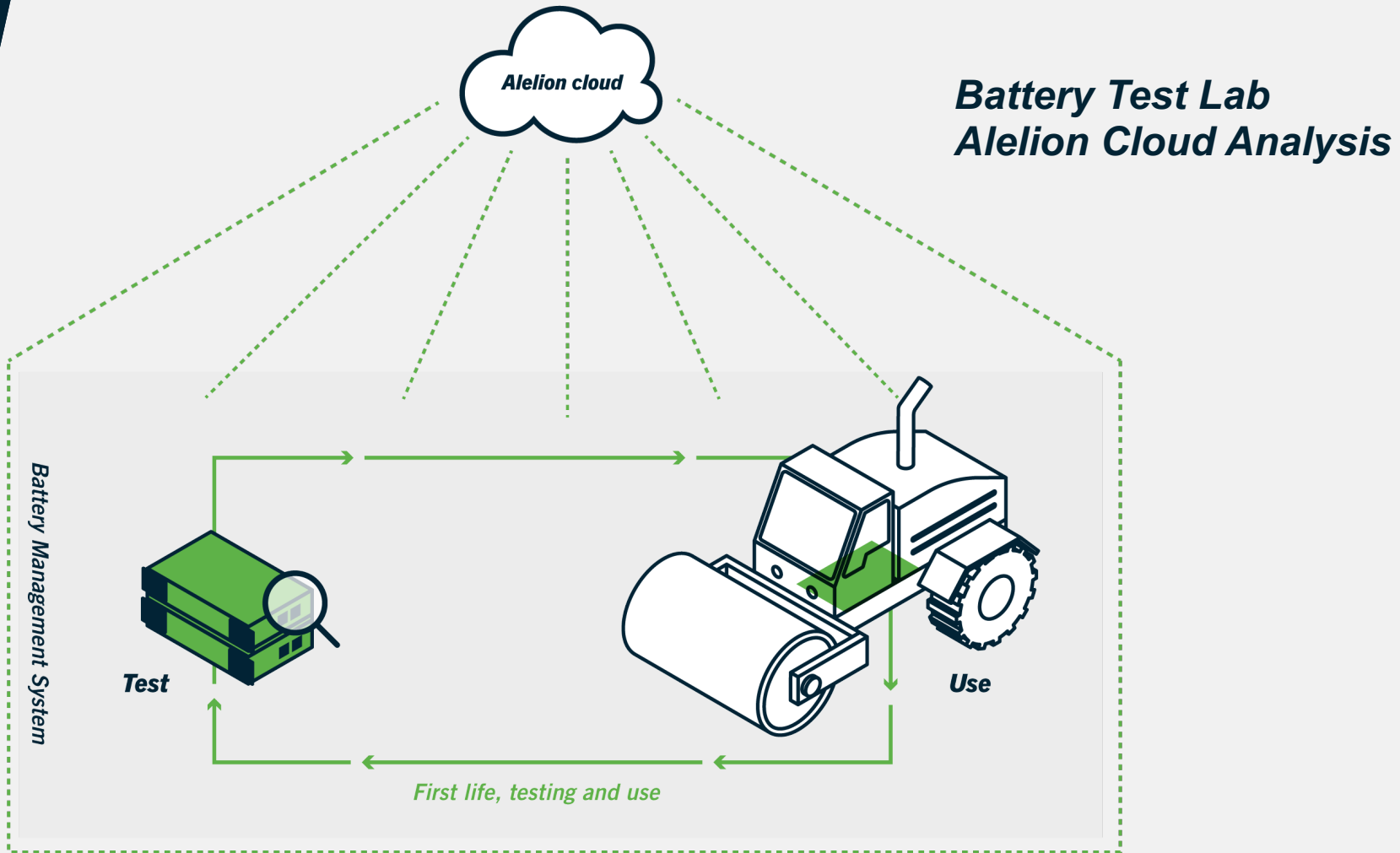




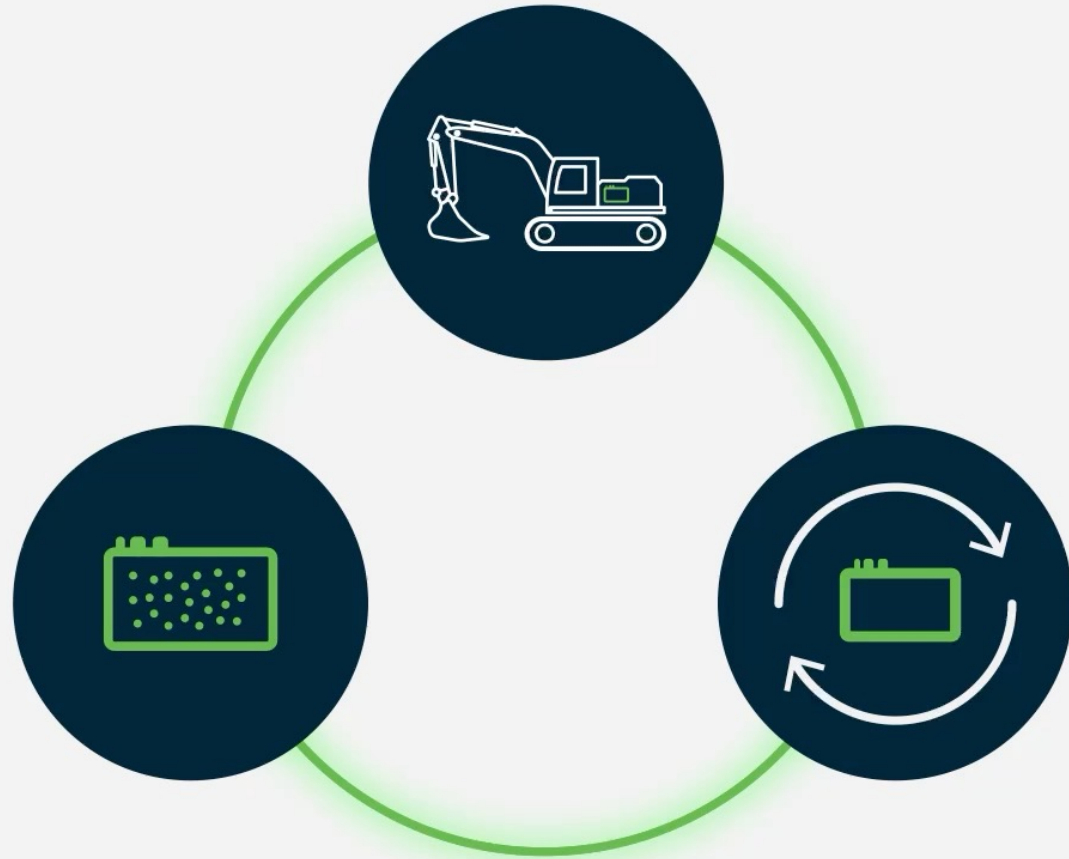
# *Extended first life = battery testing + field data combined*



# Continuous learnings and improvements



# Closing the loop



# Alelion's recycling focus





*Find out more...*

Read our whitepapers

